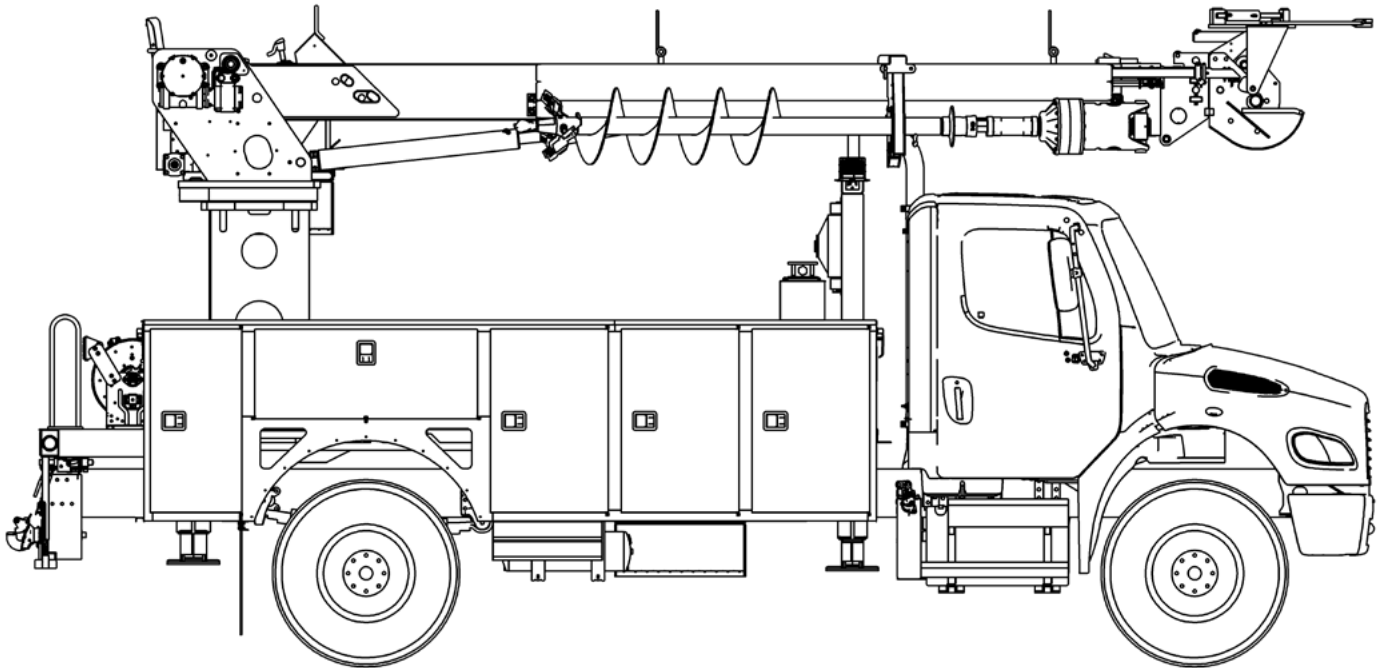




# TECH TIPS

DIGGER HANGER LATCH INSTALLATION

NO. 33



**SERVICE CALL:**  
DIGGER HANGER LATCH  
INSTALLATION



**MODEL(S):**  
C3000, C4000, C5000, C6000  
AND C7000



**TOOLS NEEDED:**  
VISE-GRIP  
HAMMER  
SPECIALITY TOOLS - SEE  
INTRODUCTION

TEREX UTILITIES TECHNICAL SUPPORT TEAM

PHONE: 1-844-TEREX4U (1-844-837-3948) | EMAIL: [UTILITIES.SERVICE@TEREX.COM](mailto:UTILITIES.SERVICE@TEREX.COM)



## **DANGER**

Failure to obey the instructions and safety rules in the appropriate Operator's Manual and Service Manual for your machine will result in death or serious injury.

Many of the hazards identified in the Operator's Manual are also safety hazards when maintenance and repair procedures are performed.

## **DO NOT PERFORM MAINTENANCE UNLESS:**

- ✓ You are trained and qualified to perform maintenance on this machine.
- ✓ You read, understand and obey:
  - manufacturer's instructions and safety rules
  - employer's safety rules and worksite regulations
  - applicable governmental regulations
- ✓ You have the appropriate tools, lifting equipment and a suitable workshop.

The information contained in this Tech Tip is a supplement to the Service Manual. Consult the appropriate Service Manual of your machine for safety rules and hazards.



TECH TIP 33 | RELEASED 03.15.2022 | VERSION 1.0  
©TEREX UTILITIES. ALL RIGHTS RESERVED

# CONTENTS

## TECH TIP #33

### TOC

4

| Manufacture installation tools  
| Extend the 2nd section

**INTRODUCTION**  
**STEP 1**

5

| Secure the vice-grip to the latch  
| Preload the springs

**STEP 2 - STEP 3**

6

| Push latch into place  
| Drive latch rod through latch

**STEP 4 - STEP 5**

7

| Bend the rod  
| Remove tube and vise-grip

**STEP 6 - STEP 7**

## INTRODUCTION

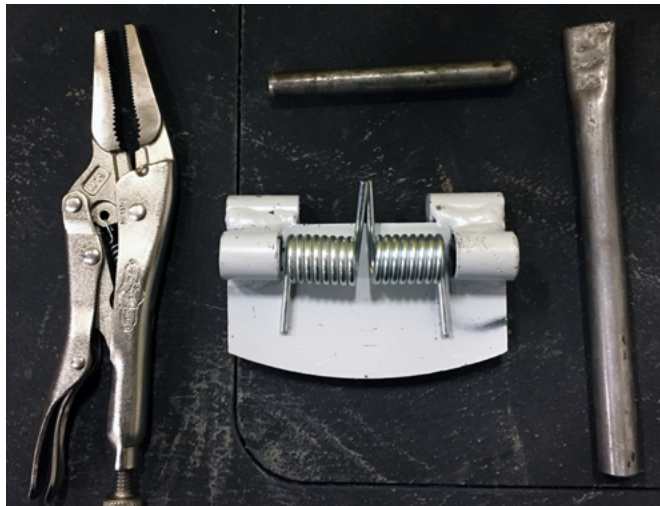
Manufacture installation tools from the following raw materials (measurements are outside diameter):

- 5/16 x 3 inch hydraulic tubing - flatten one end if desired
- 3/8 x 3 5/8 inch steel rod - bevel the ends

### FIGURE 1

## STEP 1

Extend the 2nd section to expose the auger transfer latch with the auger in the stored position. **FIGURE 2**



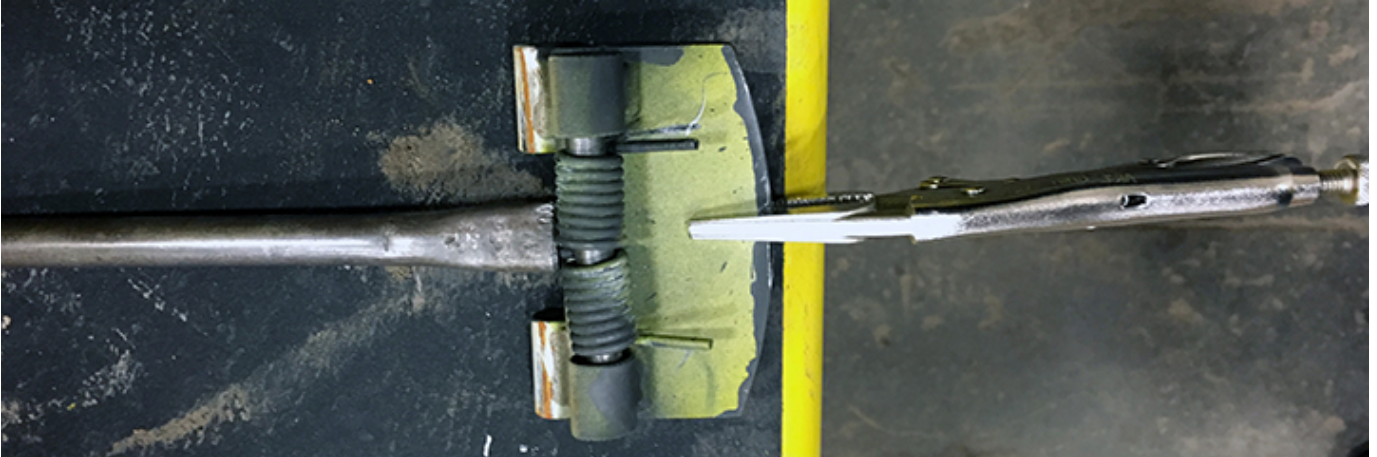
**FIGURE 1**



**FIGURE 2**

## STEP 2

Secure the vice-grip to the latch, position the springs on the latch, and slide the rod through the spring and latch. Insert the tube over the two spring tabs.



## STEP 3

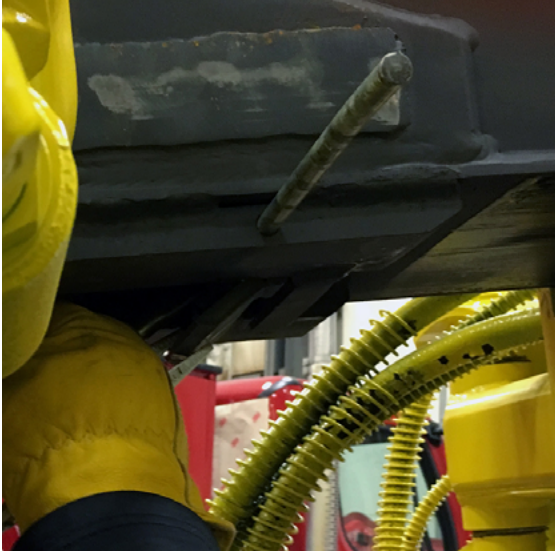
Pull the tube towards the vise-grip to preload the springs. Use caution during this procedure as you compress the 2 heavy springs.





## STEP 4

Using the palm of your hand, push latch into place in the H bracket to align holes as the spring is coiled.



---

## STEP 5

When hole is aligned, drive latch rod through latch. The alignment tool will be forced out as the rod is pushed through.



## STEP 6

When there is about 1 inch of the rod sticking out, bend it approximately 10°. The bend helps retain the rod once it is driven in flush with the H plate.



## STEP 7

Remove tube and vise-grip from the latch. Lubricate the latch hinge points. Refer to the lube chart.



FOR FURTHER ASSISTANCE,  
CONTACT THE TEREX UTILITIES TECHNICAL SUPPORT TEAM  
PHONE: **1-844-TEREX4U (1-844-837-3948)** | EMAIL: **[UTILITIES.SERVICE@TEREX.COM](mailto:UTILITIES.SERVICE@TEREX.COM)**

---