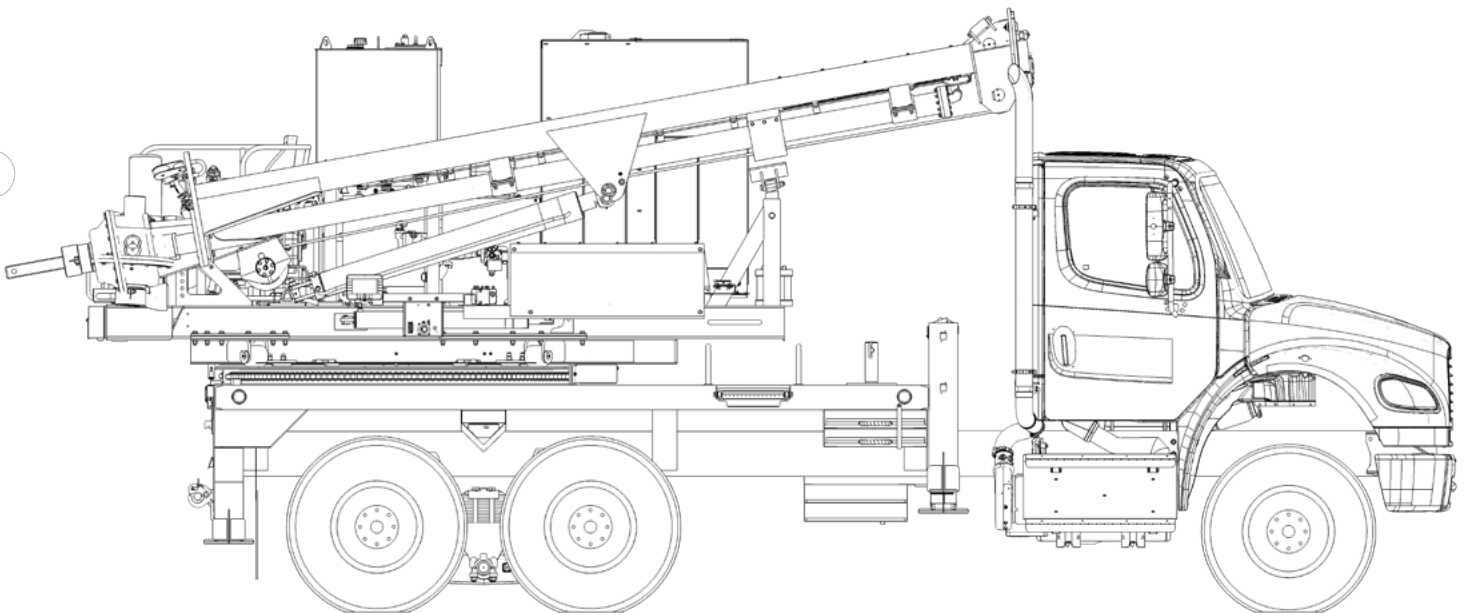




# TECH TIPS

**DETERMINE THE MANUFACTURE DATE OF A TEREX AUGER DRILL**

# NO. 90



**SERVICE CALL:**  
DETERMINE THE MANUFACTURE  
DATE OF A TEREX AUGER DRILL



**MODEL(S):**  
ALL TEREX AUGER DRILLS  
MANUFACTURED BETWEEN 1990  
AND 2012



**TOOLS NEEDED:**  
NONE

**TEREX UTILITIES TECHNICAL SUPPORT TEAM**

**PHONE: 1-844-TEREX4U (1-844-837-3948) | EMAIL: [UTILITIES.SERVICE@TEREX.COM](mailto:UTILITIES.SERVICE@TEREX.COM)**



## **DANGER**

Failure to obey the instructions and safety rules in the appropriate Operator's Manual and Service Manual for your machine will result in death or serious injury.

Many of the hazards identified in the Operator's Manual are also safety hazards when maintenance and repair procedures are performed.

## **DO NOT PERFORM MAINTENANCE UNLESS:**

- ✓ You are trained and qualified to perform maintenance on this machine.
- ✓ You read, understand and obey:
  - manufacturer's instructions and safety rules
  - employer's safety rules and worksite regulations
  - applicable governmental regulations
- ✓ You have the appropriate tools, lifting equipment and a suitable workshop.

The information contained in this Tech Tip is a supplement to the Service Manual. Consult the appropriate Service Manual of your machine for safety rules and hazards.



TECH TIP 90 | RELEASED 09.21.2022 | VERSION 1.0  
©TEREX UTILITIES. ALL RIGHTS RESERVED

# CONTENTS

## TECH TIP #90

### TOC

4

| *Serial number breakdown*

**INTRODUCTION**  
**STEP 1 - STEP 2**

5

| *Year manufactured*

**STEP 3**

6

| *Product Code*

**STEP 4**

7

| *Sequence*

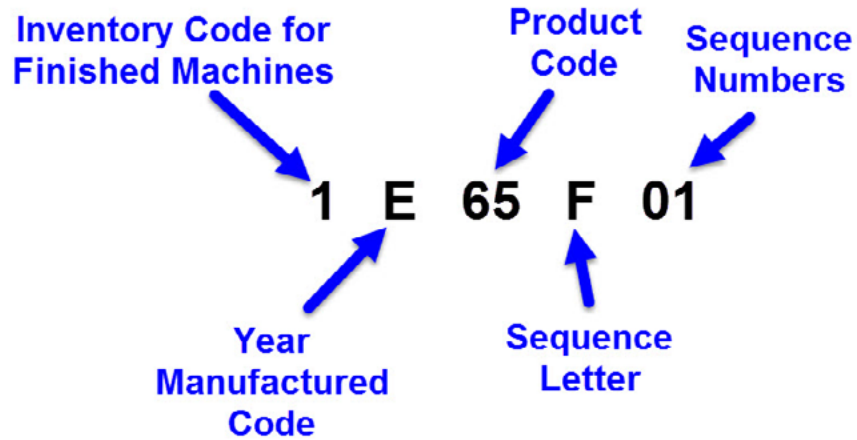
**STEP 5**

# INTRODUCTION

Use the following steps to decipher the serial number information for a Terex Auger Drill manufactured between 1990 and 2012.

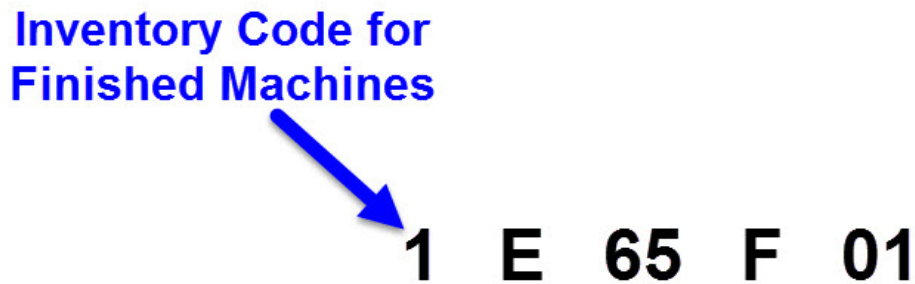
## STEP 1

Serial number 1E65F01 will be used as an example. The breakdown of the serial number is below. The remaining steps will break down each portion of the serial number.



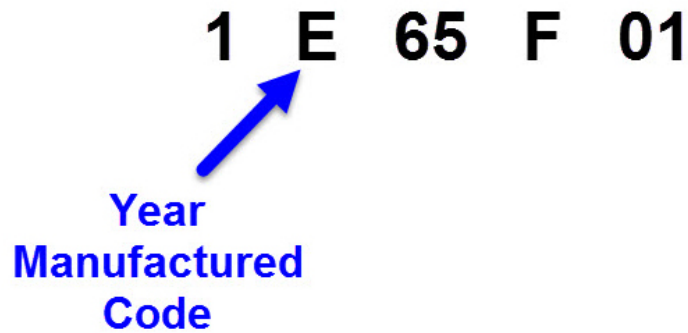
## STEP 2

The first digit is the internal inventory code for finished machines.



### STEP 3

The second position is the code indicating the year the unit was manufactured.



Use the chart below to determine the year based on the code provided. In this example the unit was manufactured in 1990.

<b>Code</b>	<b>Year</b>	<b>Code</b>	<b>Year</b>
E	1990	W	2002
C	1991	N	2003
U	1992	H	2004
Z	1993	D	2005
J	1994	K	2006
B	1995	S	2007
G	1996	M	2008
V	1997	A	2009
Y	1998	T	2010
L	1999	X	2011
P	2000	F	2012
R	2001		

# STEP 4

The next two places identify the product code. Use the following table to identify the product according to the serial number.

**Product Code**



**1 E 65 F 01**

## Product Codes

<u>Rotary</u>		<u>Jumbo (J)</u>		<u>Pressure Augers (cont'd)</u>		<u>Drifter Drills (DR) (cont'd)</u>		<u>Foundations (cont'd)</u>	
SK-25/25i/SKT	60	PK100	83	270T	21	HPRH	39	900T	79
SK-35	61	GDC1P	84	330	22	HPR1-ET	40		
		Taurus/Magnum XL	80						
SK-40	62	MK20	85	330T	23	HPR1-GT	41		
		Taurus/Magnum XLT 81							
SK-5AD	63	MK10	86	HDE	24	HPR1H-AT	42	CM-100	82
SK-3AD	64	MK35H	87	HDET	25	HPRIHST	43		
SK-70/75i/SKS	66	MK45HD	88	500	26	HPR2B	44		
<u>(TD)</u>								<u>Track Drills</u>	
SKS-W	66	MK65H	89	500T	27			SCH 5000	01
SKS-13	67	MK65P	90	TD30K	31	<u>Digger Derrick</u>		SCH 5000 C	02
SKS-16	67	TK140H91				TX100	50	SCH 5000	
CL	03								
SKSS-12	67	Truck Jumbo	92	<u>Booms (B)</u>		TX200	51	SCH 4500	04
SKSS-15	67	Special	93	MD84	45	TX300	52	SCH 3500	
BVI	05								
SK-50T/SKSS67				MD105	46	TX400	53	SCH 4000	05
SKF12	68	<u>Mini Derrick</u>		HD104	47	TX2000	54	SCH 2500 II	06
SKF15	68	1100G	10	HD126	48			SCH 3000	06
SK-30i/SKF	68	UD900	56	HD148	49	<u>Foundation</u>		ATD 3800 S	07
SK-40i/SKF	68					600	70	ATD 3800 T	08
SK-45i/SKF	68	<u>Stringing</u>		<u>Drifter Drills (DR)</u>		600T	71	300/345	09
SK-50i/SKF	68	DPTR5	30	D93L	31	650	50	400	58
SK-55i/SKF	68			DH123	32	700L	72	402	59
SK-60i	69	<u>Modifications (M)</u>		PR123J	33	700LT	73	SD 250/R20	55
SKSS-L	69	MOD-1	99	PR55A	34	700	74	R20C	55
RDC16D	94	Tank Drill Kits	99	PR55C	35	700T	75	R20T	56
GDCJ	95			PR66B	36	800	76		
GDCCL	96	<u>Pressure Augers</u>		PR1000-DW	37	800T	77		
GDCM	97	270	20	PR1000-CW	38	900	78		

## STEP 5

The sequence letter and number is used to determine the order in which this unit was built in the given year.

1 E 65 F 01

Sequence Letter

Sequence Numbers

1 E 65 F 01

### Feeds (F)

UFA 12 11  
2MSB 12  
2MSUC 13

### Sequence Letter

HFM12 14  
HFM14 15  
HFM16 16  
UFH12 17  
UFH20 18  
UFA12 19  
UFA14 28  
HFAH16 29

### Year Manufactured Codes & Sequence Letter

#### Year Manufactured Letter Code

#### Calendar Year

E	1990	F
C	1991	X
U	1992	T
Z	1993	A
J	1994	M
B	1995	S
G	1996	K
V	1997	D
Y	1998	H
L	1999	N
P	2000	W
R	2001	R
W	2002	P
N	2003	L
H	2004	Y
D	2005	V
K	2006	G
S	2007	B
M	2008	J
A	2009	Z
T	2010	Y
X	2011	C
F	2012	E

After all of the sequential numbers are used for a letter in the applicable log, go to the next letter.



FOR FURTHER ASSISTANCE,  
CONTACT THE TEREX UTILITIES TECHNICAL SUPPORT TEAM  
PHONE: **1-844-TEREX4U (1-844-837-3948)** | EMAIL: **[UTILITIES.SERVICE@TEREX.COM](mailto:UTILITIES.SERVICE@TEREX.COM)**

---